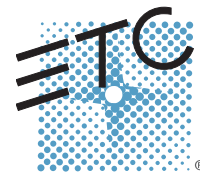


ETC® Service Note

Congo™ jr Video Card Replacement



Tools Required:

#2 Phillips Screwdriver

#1 Phillips Screwdriver

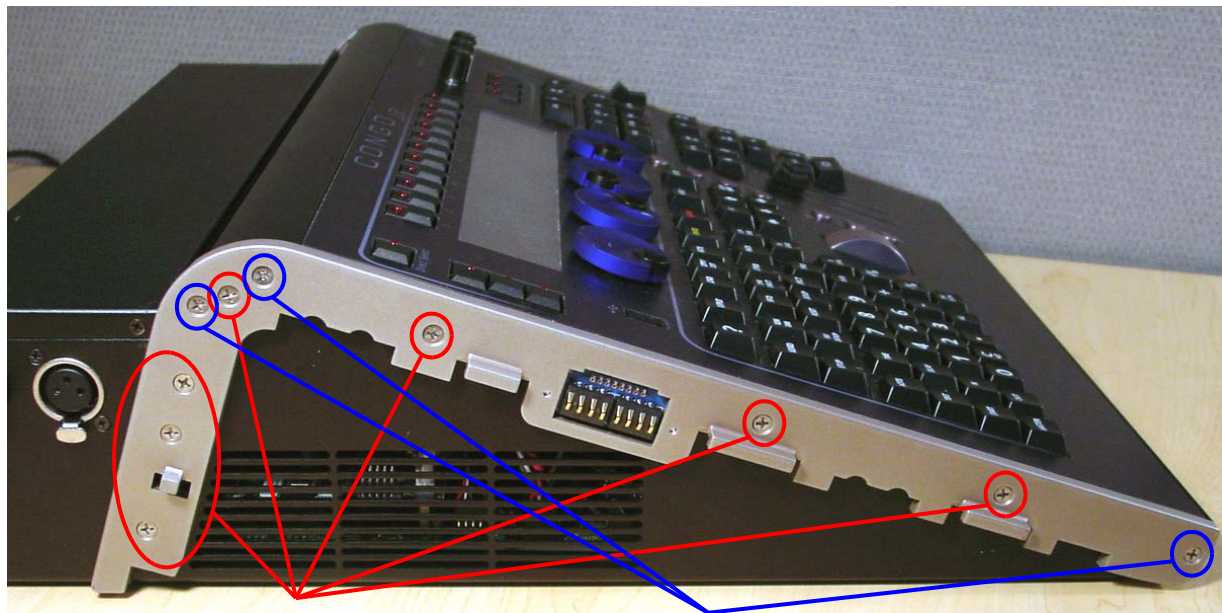
Procedure:

Step 1: Remove the protective side panels from the Congo jr Console.

Step 2: Remove the 7 screws indicated in **Red** below.

Step 3: Loosen the 3 screws indicated in **Blue** below.

NOTE: DO NOT remove the 3 screws.



Remove these screws

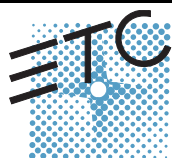
Loosen these screws
2 full turns

Step 4: Carefully flip over the console and loosen the 3 screws in **blue** below:

NOTE: DO NOT remove the 3 screws.



Loosen these screws

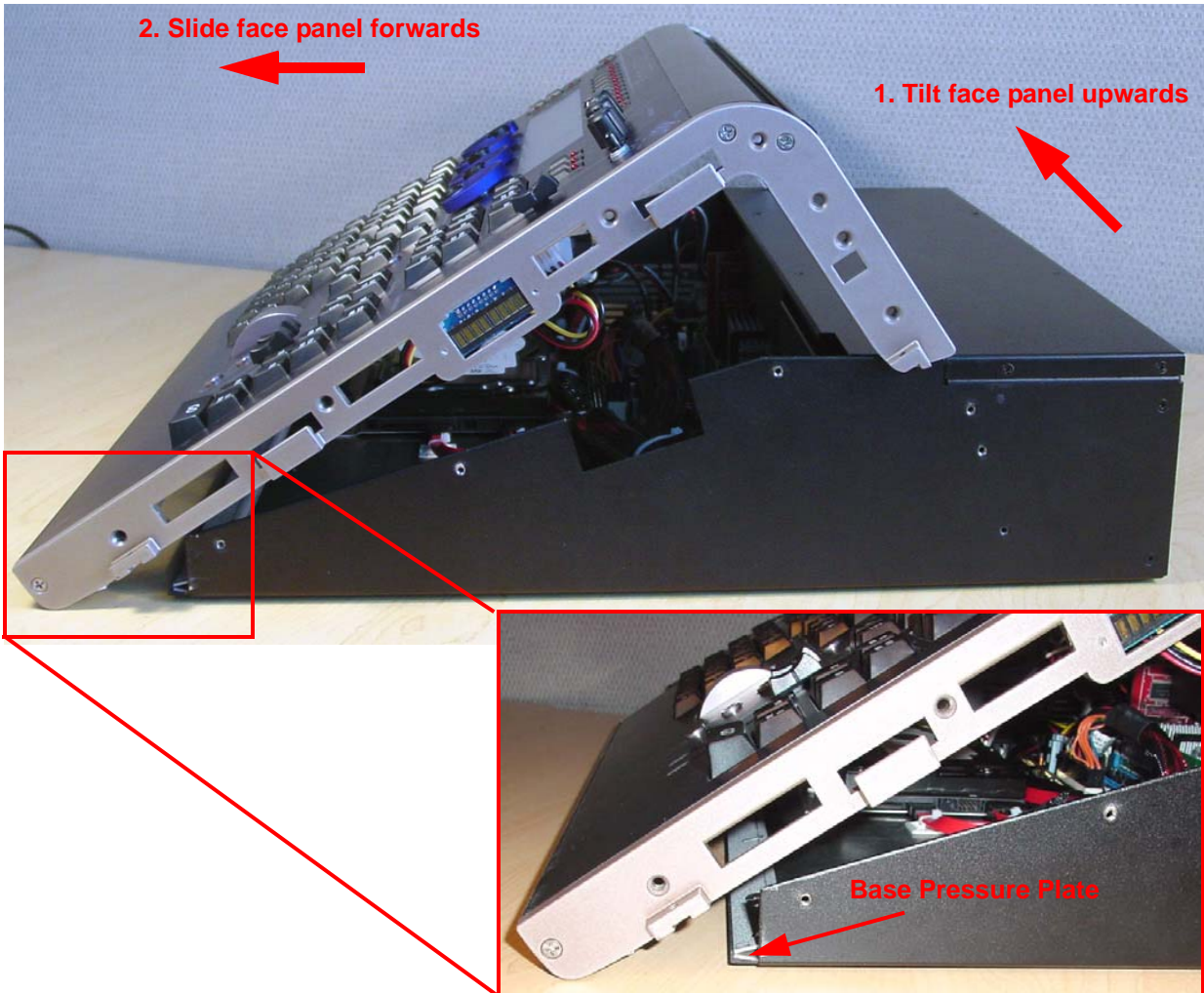


Corporate Headquarters ■ 3031 Pleasant View Road, P.O. Box 620979, Middleton, Wisconsin 53562-0979 USA ■ Tel +608 831 4116 ■ Fax +608 836 1736
London, UK ■ Unit 26-28, Victoria Industrial Estate, Victoria Road, London W3 6UU, UK ■ Tel +44 (0)20 8896 1000 ■ Fax +44 (0)20 8896 2000
Rome, IT ■ Via Ennio Quirino Visconti, 11, 00193 Rome, Italy ■ Tel +39 (06) 32 111 683 ■ Fax +39 (06) 32 656 990
Holzkirchen, DE ■ Ohmstrasse 3, 83607 Holzkirchen, Germany ■ Tel +49 (80 24) 47 00-0 ■ Fax +49 (80 24) 47 00-3 00
Hong Kong ■ Room 1801, 18/F, Tower 1 Phase 1, Enterprise Square, 9 Sheung Yuet Road, Kowloon Bay, Kowloon, Hong Kong ■ Tel +852 2799 1220 ■ Fax +852 2799 9325
Service: (Americas) service@etcconnect.com ■ (UK) service@etcconnect.com ■ (DE) techserv-hoki@etcconnect.com ■ (Asia) service@etcconnect.com
Web: www.etcconnect.com ■ Copyright © 2006 ETC. All Rights Reserved. ■ Product information and specifications subject to change.
● Pending ■ Rev A ■ Released 02/2007

ETC Service Note

Congo™ jr Video Card Replacement

- Step 5: Flip the console back onto the base.
- Step 6: Lift the back side of the face panel upwards away from the base.
- Step 7: Slide the face panel towards the front of the console. The face panel will slip under the base pressure plate.

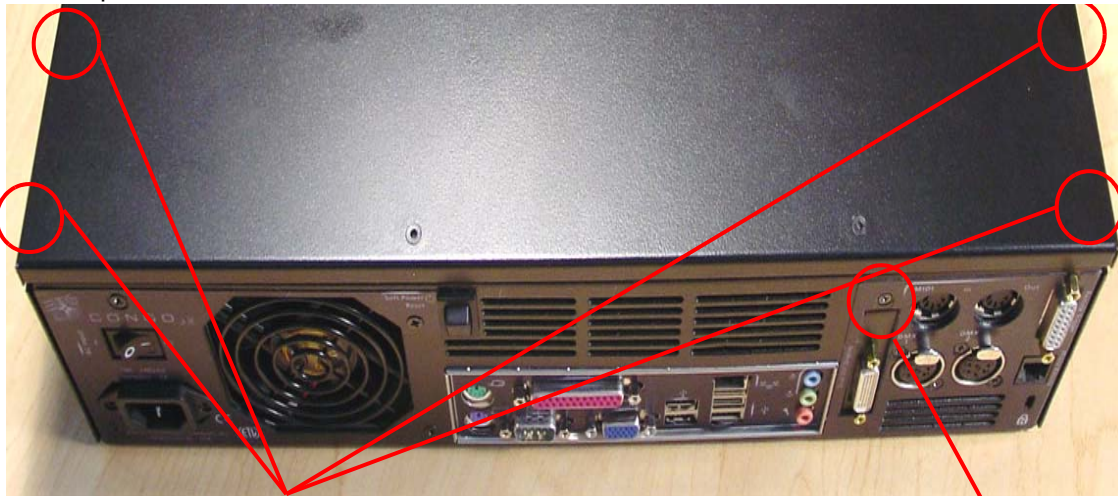


- Step 8: Rest the face panel off to the left side of the base unit. (the side with the DMX connectors) There is no need to remove the face panel cables when replacing the video card.

ETC Service Note

Congo™ jr Video Card Replacement

Step 9: Remove all 5 screws from both sides and the rear of the base.



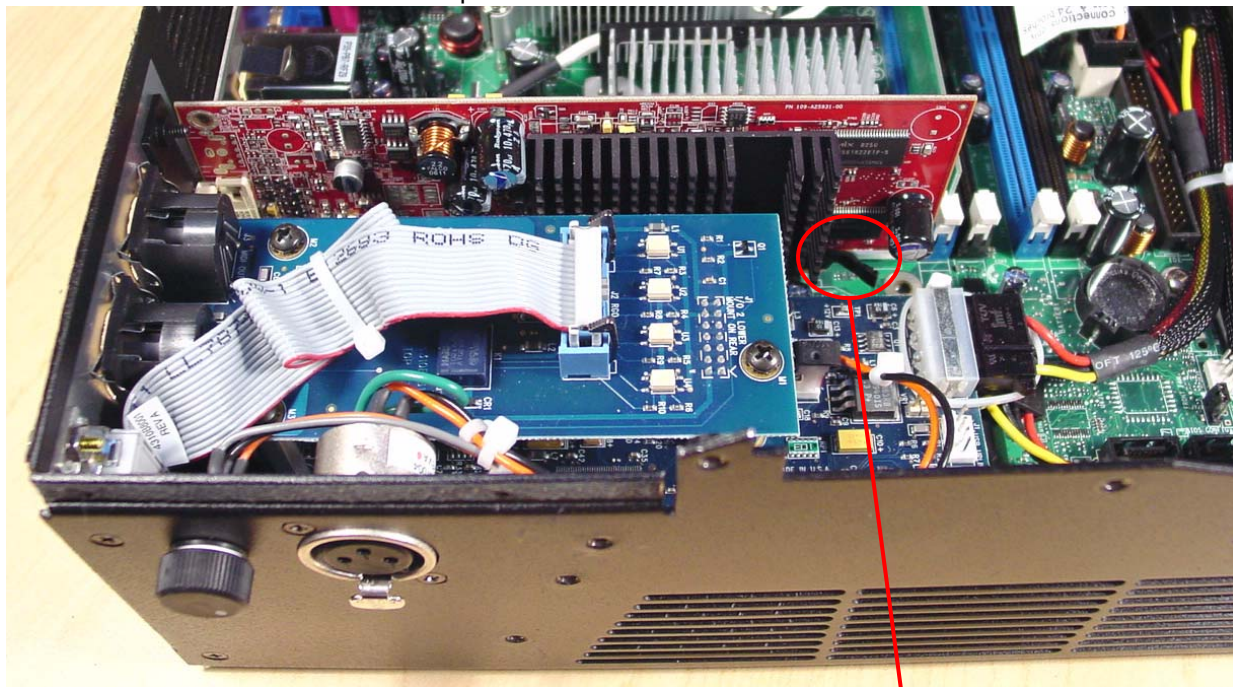
Remove these screws (located on side of chassis)

Remove this screw

Step 10: Remove the base cover, and set aside.

Step 11: Locate the AGP video card near the MIDI and DMX connectors.

Step 12: Pull back the AGP slot locking tab towards the DMX I/O Card. At the same time, pull the video card up and out of the AGP slot.

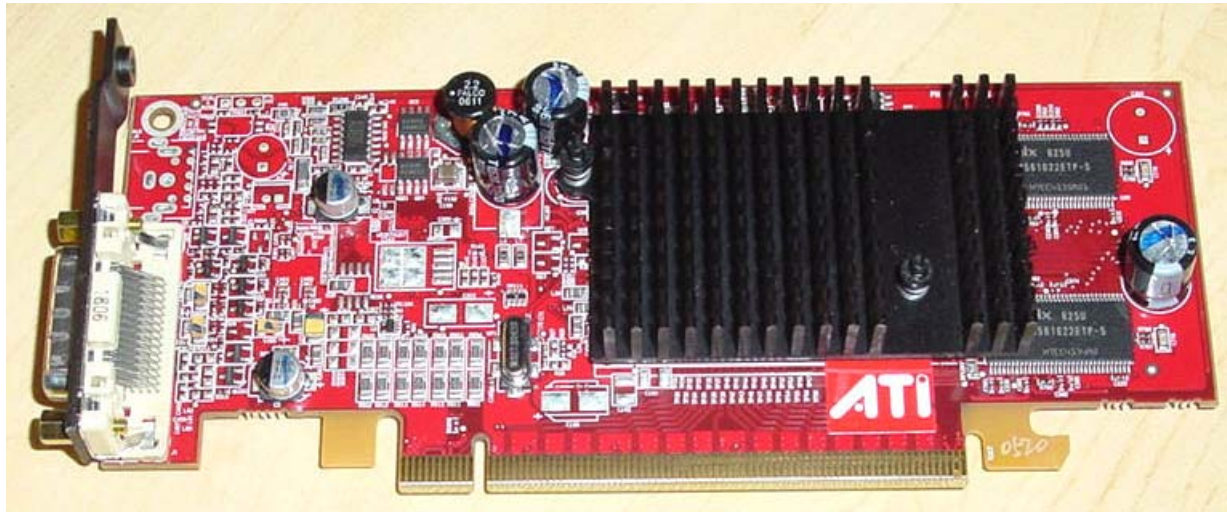


Pull APG slot tab towards DMX I/O Card

ETC Service Note

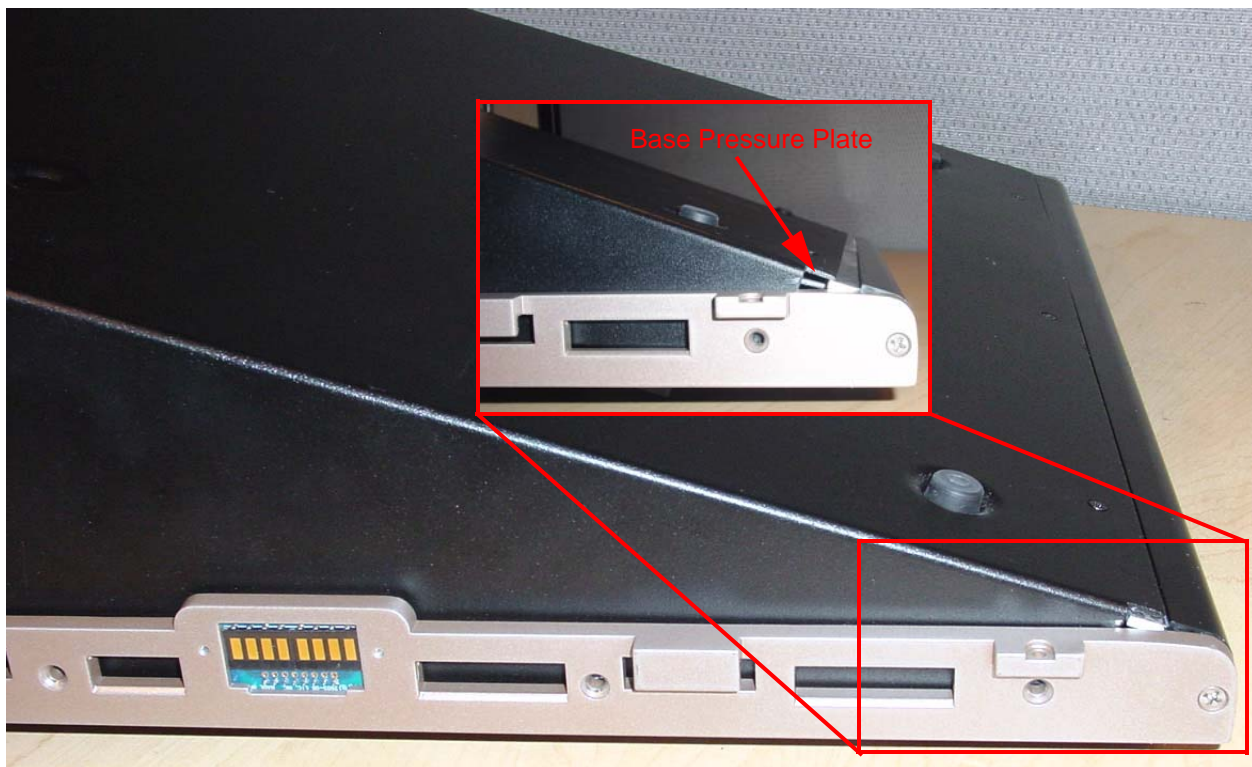
Congo™ jr Video Card Replacement

Step 13: Set the defective/damaged video card aside.



Step 14: Insert the new video card into the motherboard. There should be a click heard/felt when the video card is seated all the way into the AGP Slot.

Step 15: Place the base cover back onto the base of the console and re-attach all 5 screws.



Step 16: Slide the face panel back under the base pressure plate.

Step 17: Re-attach all 7 screws from each side of the console face panel.

Step 18: Flip the face panel over and tighten the 3 screws on the base of the console.

Step 19: Power the console up and verify console operation.